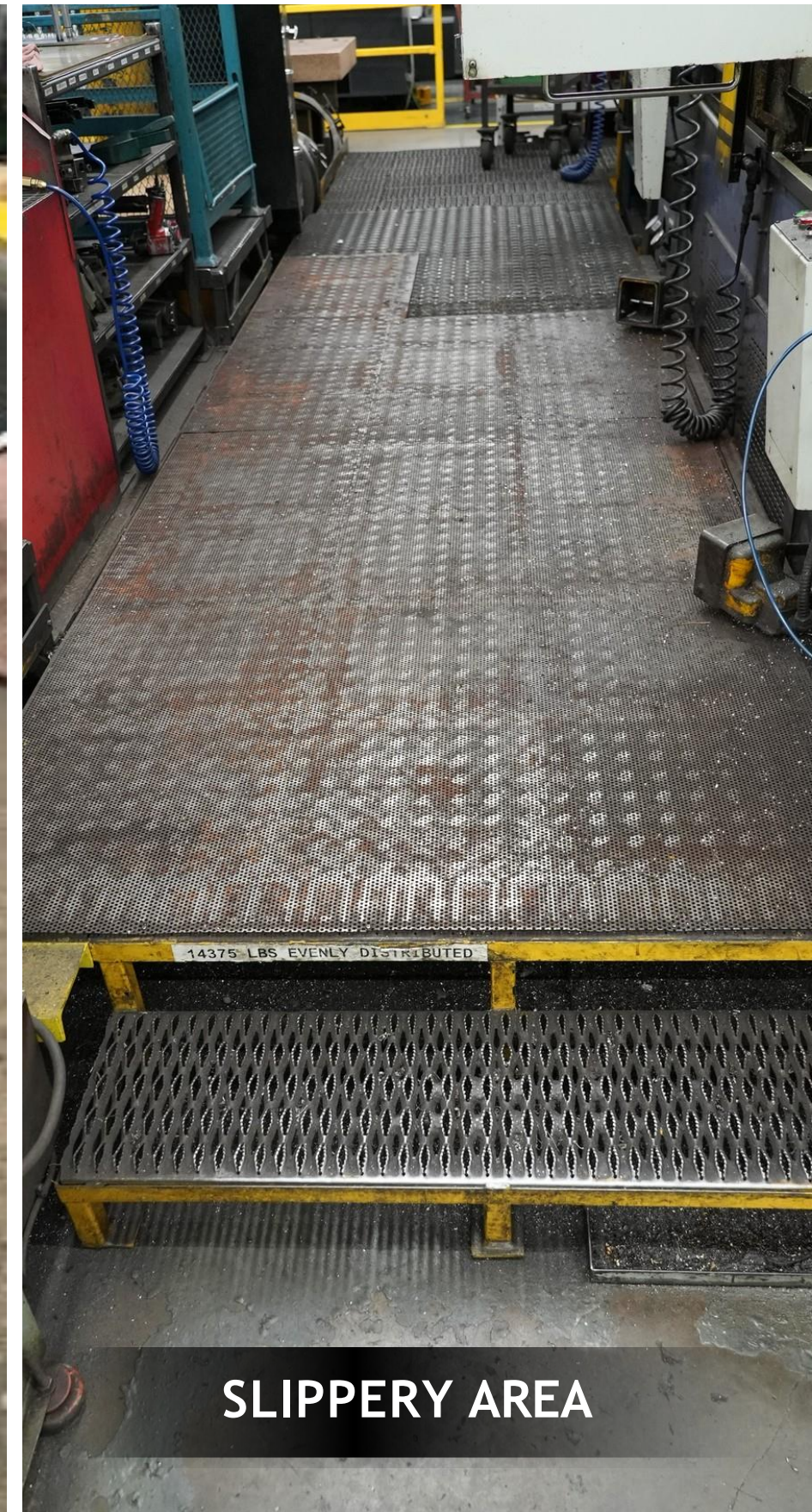
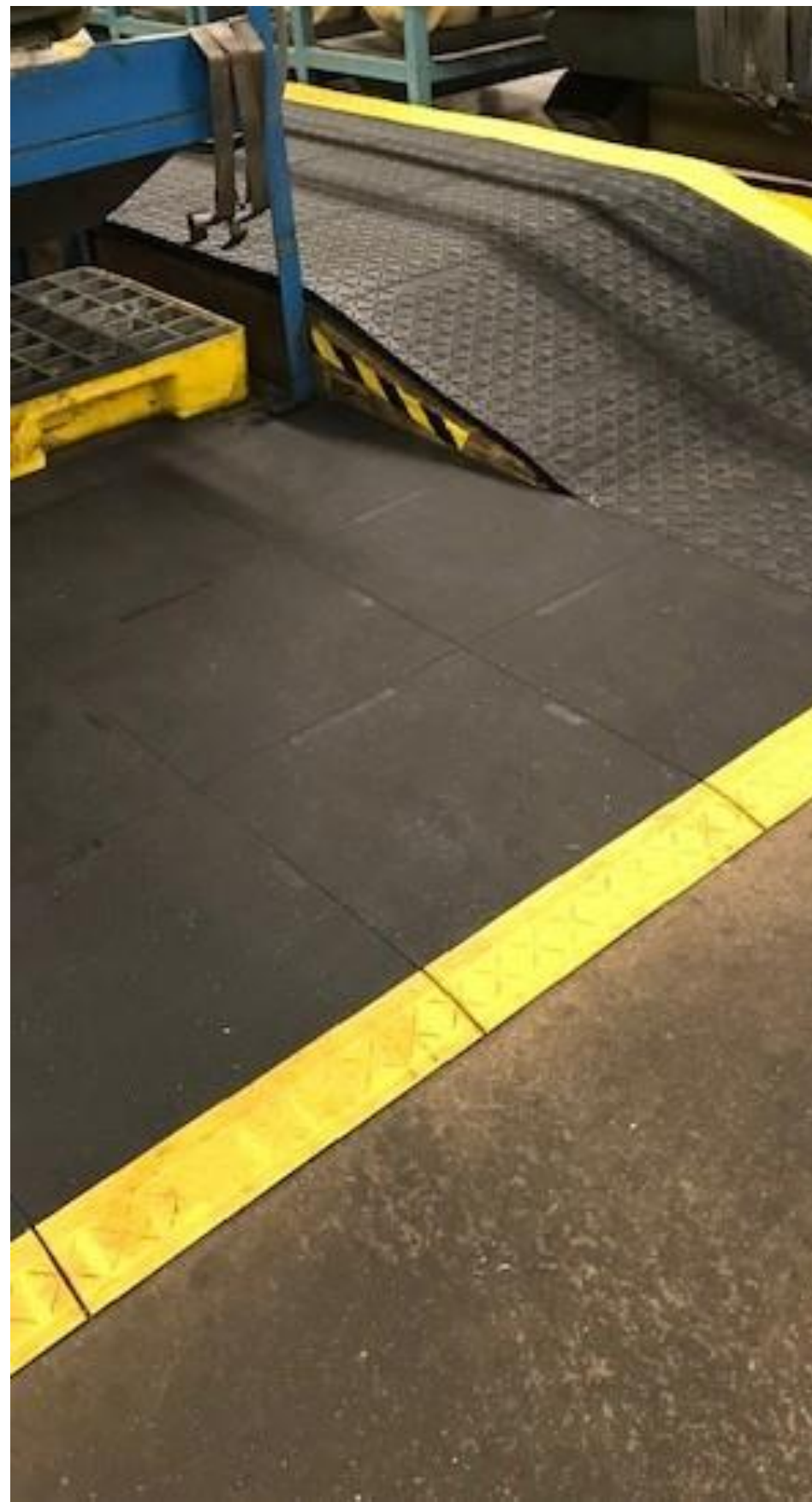


STRATEGIC OPPORTUNITY: MIDDLE EAST MARKET EXPANSION

WHAT ARE YOUR PEOPLE STANDING ON?



ENHANCING SAFETY AND SUPPORT FOR HAPPIER, MORE PRODUCTIVE EMPLOYEES



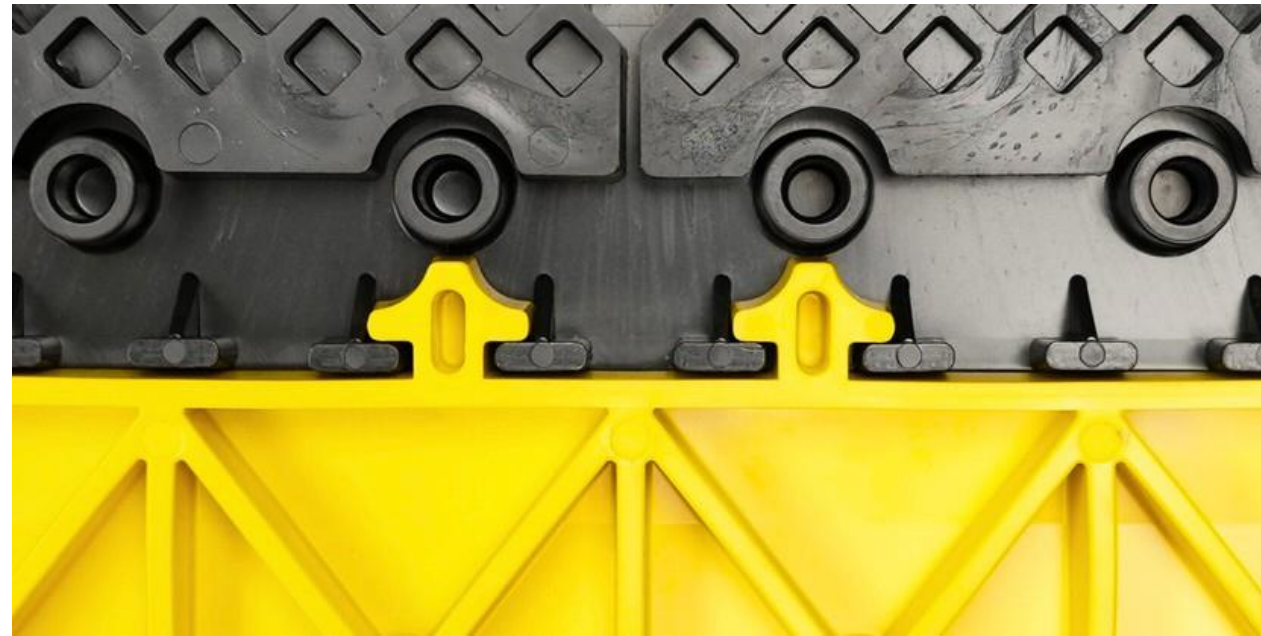
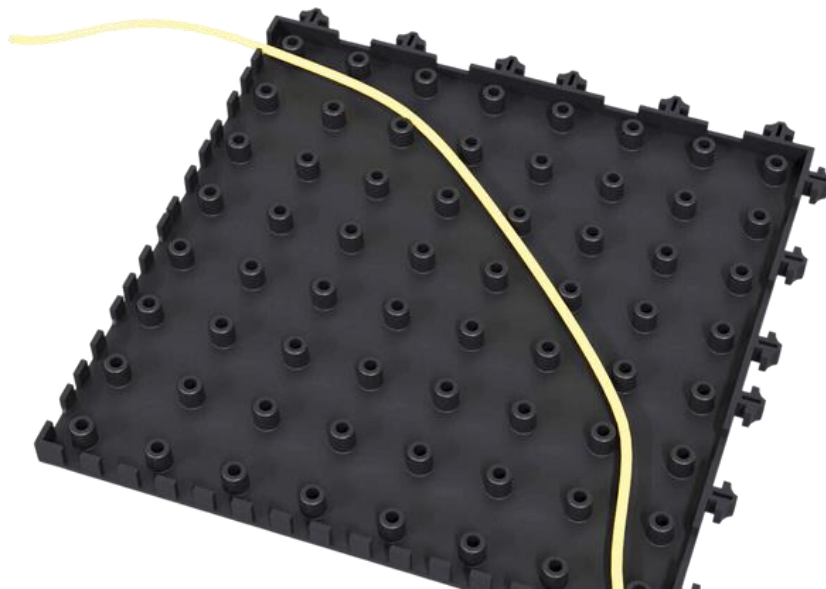


4 REASONS TO STAND WITH US



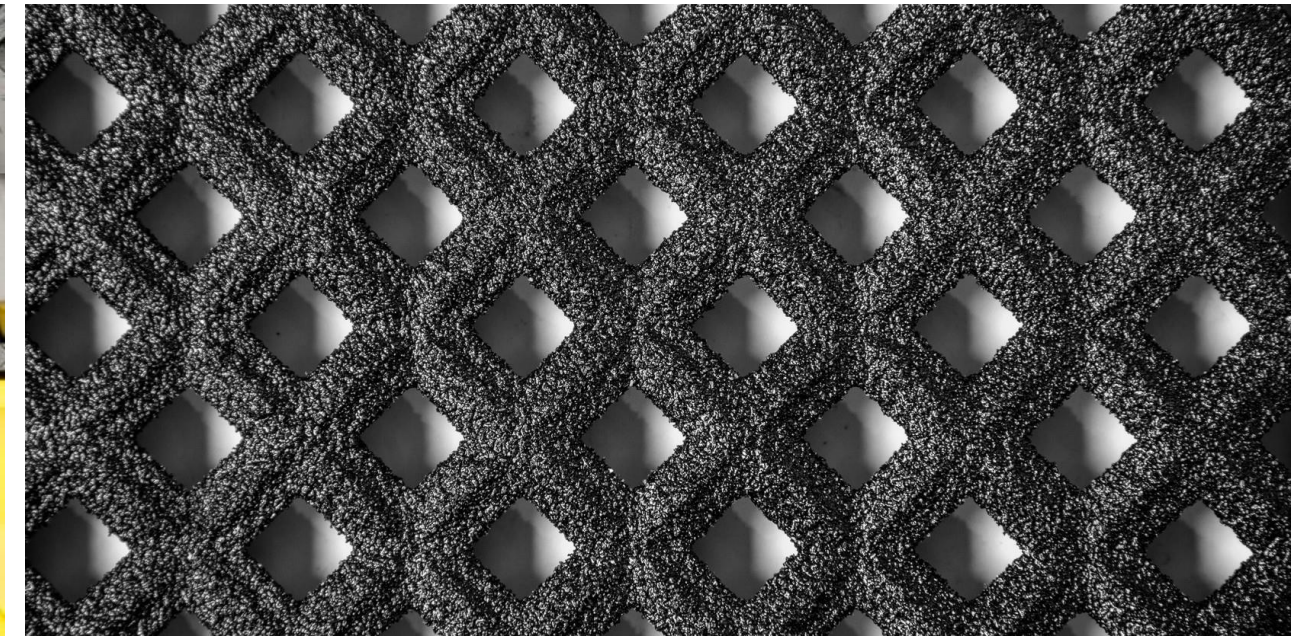
SAFE-FLEX™ CORD MANAGEMENT

- Leg channel design protects cords and prevent tripping hazards.



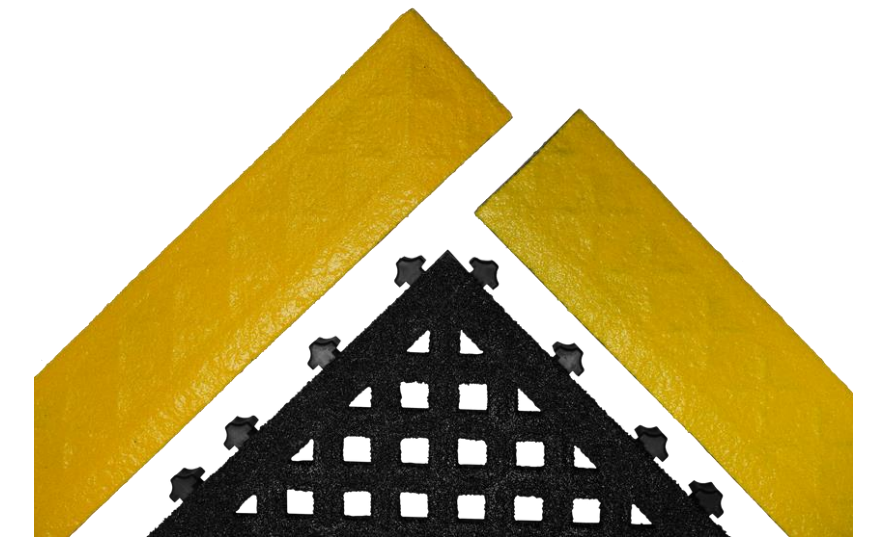
SAFE-FLEX™ LOCKING MECHANISM

- Securely locks tiles together and will not come apart on the floor.
- When needed, mats can easily pull up and separate without damage (i.e. replacing one tile, cleaning underneath, reconfiguring a work area).



SAFE-FLEX™ ANTI-SLIP

- Proprietary gritted surface, specifically designed to keep feet planted on the ground.

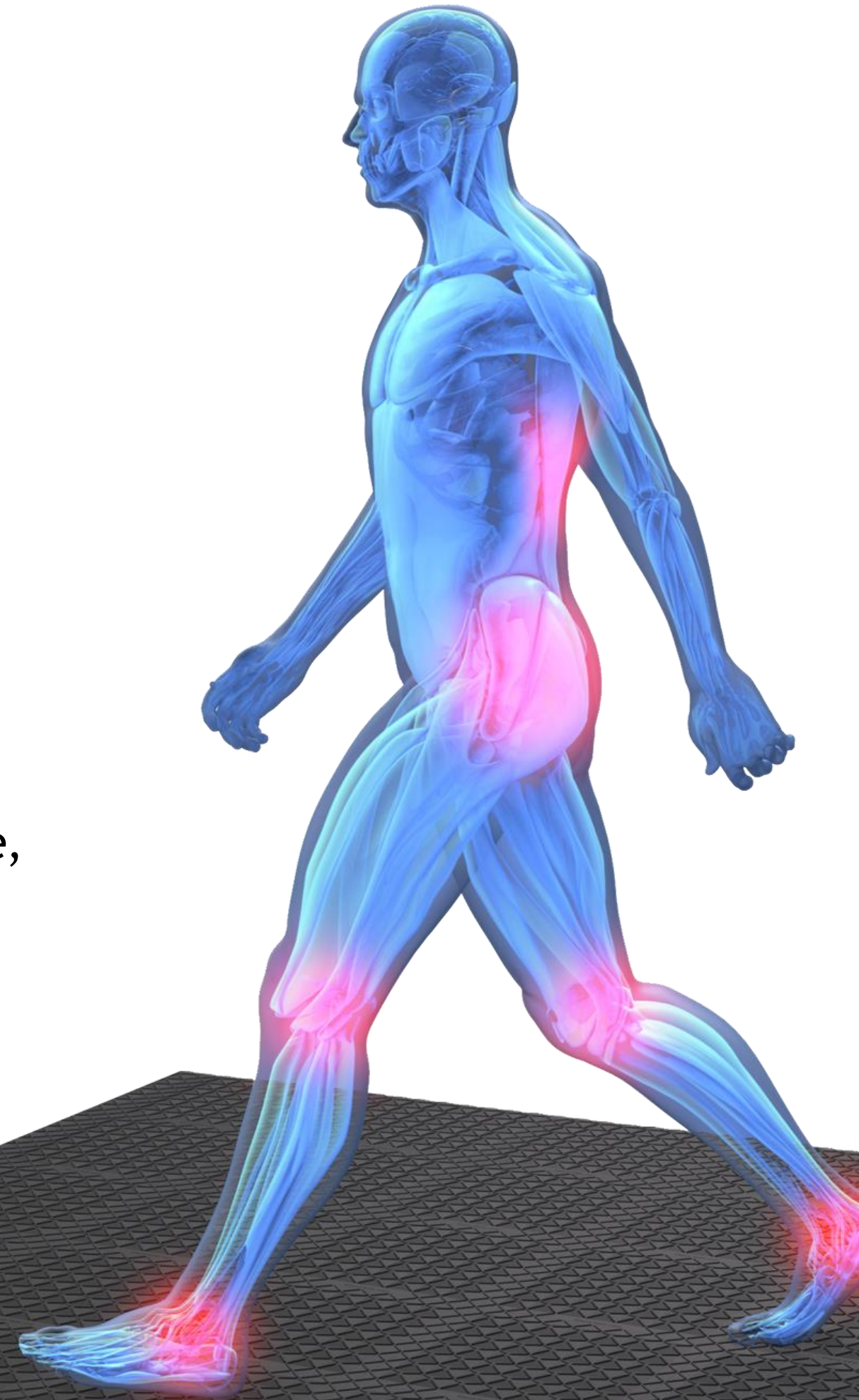
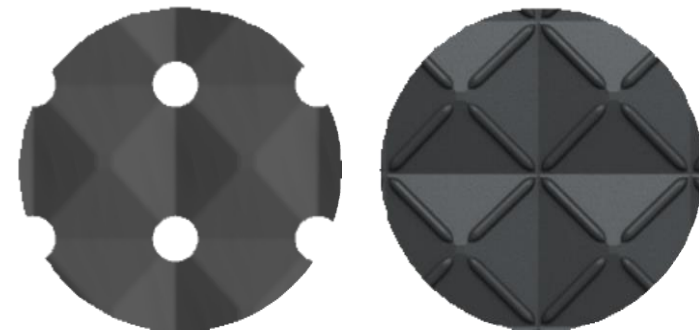




Compression Flex Technology™

Effective energy return developed by professionals in ergonomics and engineering.

- Surface compresses slightly then returns to its original position.
- Domes are designed to cause imperceptible muscle contractions that increase blood flow.
- Helps to prevent pain from standing, fatigue, old injuries and varicose veins.



- Made from 100% recycled PVC and TPU
- 100% Recyclable at end-of-life



SAFE-FLEX™ MODULARITY

- Modular tiles allow for total size and color customization thanks to our unique connection system
- Connect different tile types together to create a custom space for your customer's unique needs.

SAFE-FLEX™ AND 6S INITIATIVES

- Sort, Set in Order, Standardize, Safety, Sustainability, Shine.
- Multiple color and size options allow for clear workspace distinction
- Can be tailored to streamline workplace operations and organization



SOLUTIONS FOR ANY AREA



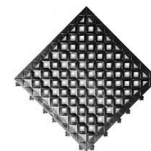
Production, Machining, Quality Control, Tools & Maintenance, Welding, Assembly, Finishing



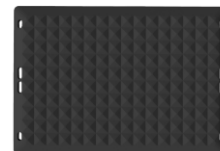
Anti-Fatigue



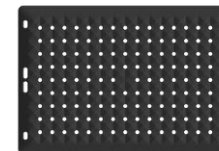
A1-B



A2-B



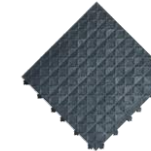
SS1-PRO



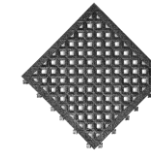
SS2-PRO



Anti-Slip (Grit)



AG1-B



AG2-B



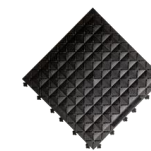
Anti-Shock (ESD)



ESDA1-B



Heavy Duty



HDA1-B



HDA1-SMB



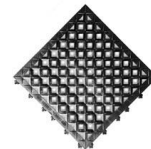
Warehousing, Distribution, Hospitality, Retail, Packing, Customer Service



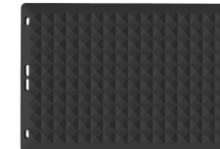
Anti-Fatigue



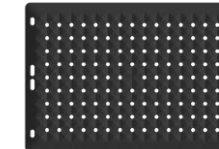
A1-B



A2-B



SS1-PRO



SS2-PRO



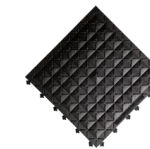
Light Duty



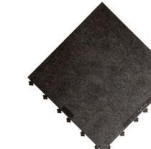
RF1-B



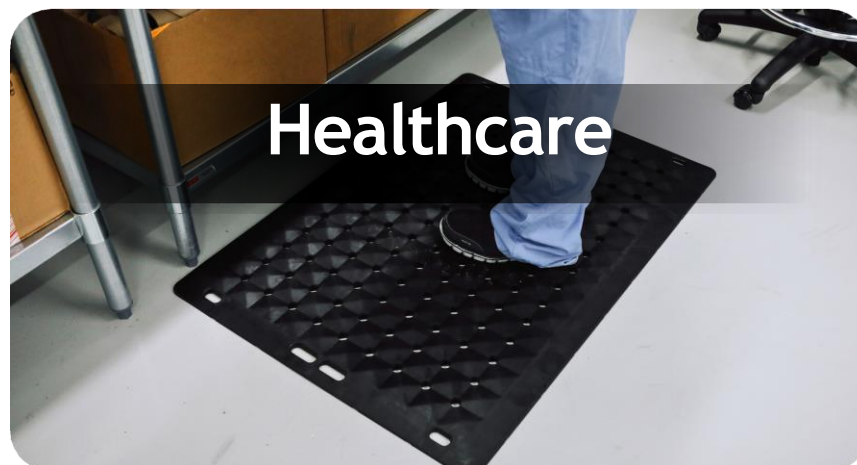
Heavy Duty



HDA1-B



HDA1-SMB



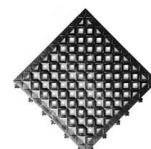
Hospitals, Long-Term Care, Outpatient Services, Medical Research, Pharmacies, Training



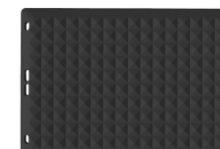
Anti-Fatigue



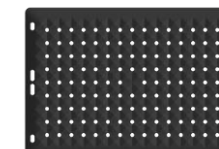
A1-B



A2-B



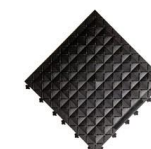
SS1-PRO



SS2-PRO



Light Duty



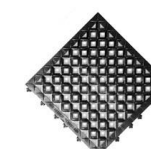
RF1-B



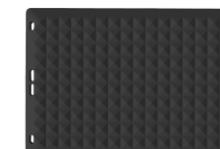
Antimicrobial



AM1-B



AM2-B






SS1-AM

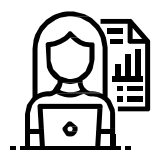


SS2-AM

VALUE FOR CUSTOMERS

		2 YEARS	3 YEARS	5 YEARS	
	3ft x 5ft \$275 each	\$ 275 REPLACEMENTS: 0	\$ 275 REPLACEMENTS: 0	\$ 275 REPLACEMENTS: 0	 \$140K PER 500 EMPLOYEES
FOAM & RUBBER	3ft x 5ft \$95 each	\$ 380 REPLACEMENTS: 4	\$ 570 REPLACEMENTS: 6	\$ 950 REPLACEMENTS: 10	 \$475K PER 500 EMPLOYEES

INDIRECT COST SAVINGS



ADMIN COSTS

The cost of having to constantly reorder matting.



LANDFILL COSTS

The cost of contributing to landfills, both financially and environmentally.



INJURY CLAIMS

Data tells us that the average cost of a injured employee is \$40K and 12 workdays, per claim.



EMPLOYEE TURNOVER

The cost of replacing employees due to injury.



WORKER FATIGUE

According to the National Safety Council, the cost of fatigue ranges between \$1200 and \$3100 in reduced productivity, per worker, annually.

NORTH AMERICAN TEST RESULTS



Flammability

ASTM E 648

Class 1 Rating



Resistance Point to Point

ANSI/ESD S7.1
ANSI/ESD S7.1

6.13E+08
1.40E+08



Compression

Using an Instron
Materials Testing
System measured
using a size 9 work
boot template

0.040" - .110" @
300lbs



Compression 2

Measured using a
1.5"x1.5" square in
accordance with
ASTM D575

0.14" - .42" @ 500lbs



Durometer

Shore 'A' hardness
with 15 second delay
using a Rex Gauge
Model 3000 Max-Hand
Durometer

85 - 88 Shore 'A'
Hardness



Max Loading

Instron Materials
Testing System
2,250 lbs over an area
of 3" x 5.25"
= 143 PSI

No permanent
deformation



Tensile Test

ASTM D412
Stress:
1,170 - 1,620 PSI

Regular - Great
Strength



Tear Test

ASTM D624
Peak Load:
36.2 - 75.2 lbs

Regular - Great
Strength



Friction (COF)

ASTM D1894
(modified using a
2.5"x2.5" section of
work boot)

0.9 - 1.54 Static COF



Wear Test

SAE J1530 (17)
Abrasive wheel: H-18
@2000 cycles with
1000g load applied

Great Durability



Bacteria Testing

ISO 22196:2011

89.2% - >99.9%
reduction of pathogens



Fungal Testing

ASTM G-21-15

Free of Fungal Growth
@ 28 Days

EUROPE TEST RESULTS



Reaction to Fire Classification

EN 13501-1:2018
EN ISO 9239-1:2010
EN ISO 11925-2:2010

C_{fl} - s2
E_{fl} - s2



Electrical Resistance

EN 1081:2018

1.3x10⁶
Static Dissipative Floor



Dry Slip Resistance

EN 14041:2004

PASS - DS Rating



Slip Potential

DIN 51130:2014

R10 - R13 Rating



REACH Regulation

EN 16711-1:2015 in
accordance with SATRA
SOP CAT-043
PD CEN ISO/TS
16190:2013 in accordance
with SATRA SOP CAT-047
EN ISO 14389:2014 in
accordance with SATRA
SOP CAT-024

Meets REACH
Requirements

SELLING MADE EASY

Redmount Canada
streamlines the selling process for
<https://www.redmountcanada.ca>
seamless growth in the Middle East.

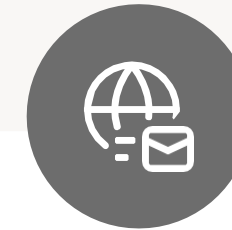
Your success is our
strategy.



Targeted Sales Materials for the Middle East

High-impact resources
designed specifically
for Middle Eastern
markets.

01



Key Customers & Industry

Identifying and
engaging the most
influential customers
across key sectors.

02



Localized Content

Professionally
translated & culturally
tailored content to
connect with customers.

03



Co-Branded Materials

Strengthening your
brand alongside ours
for unified market
presence.

04



Easy Designing & Quoting

Our tile configuration
tool makes it simple
for you to plan and
close deals.

05



On-Going Support & Free Samples

Reliable assistance
and real-world product
trials to strengthen
sales outcomes.

06